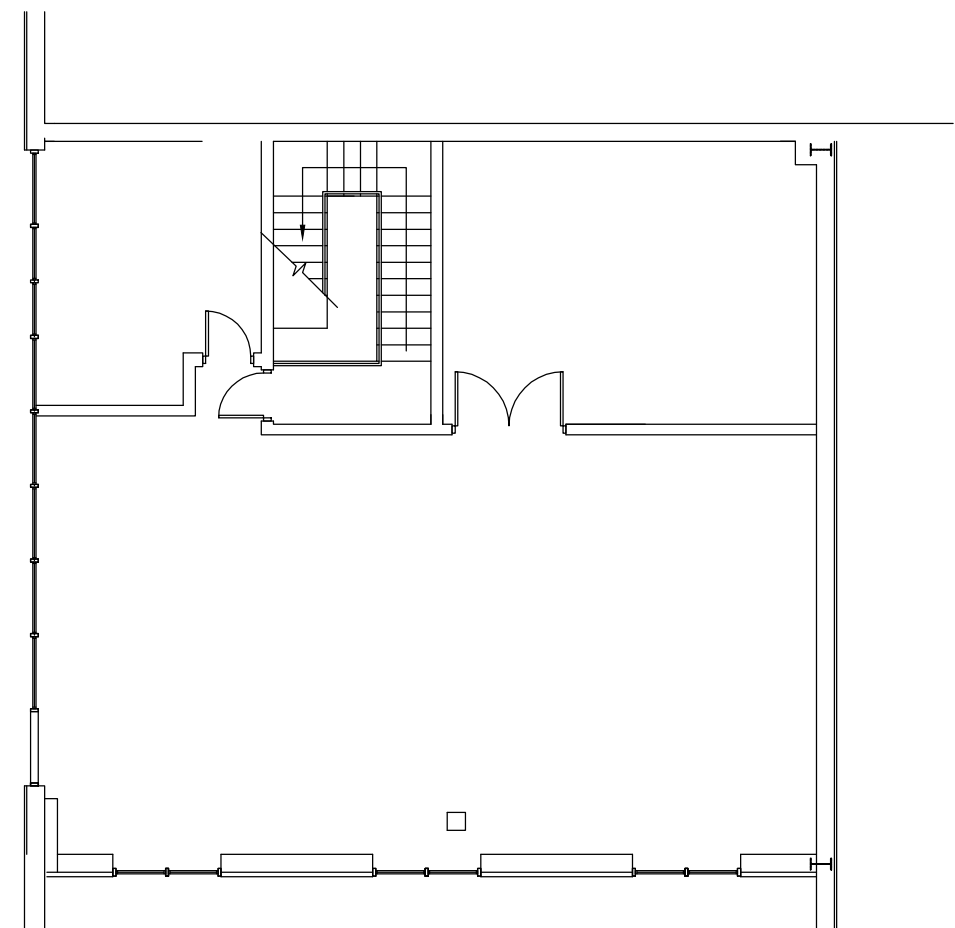
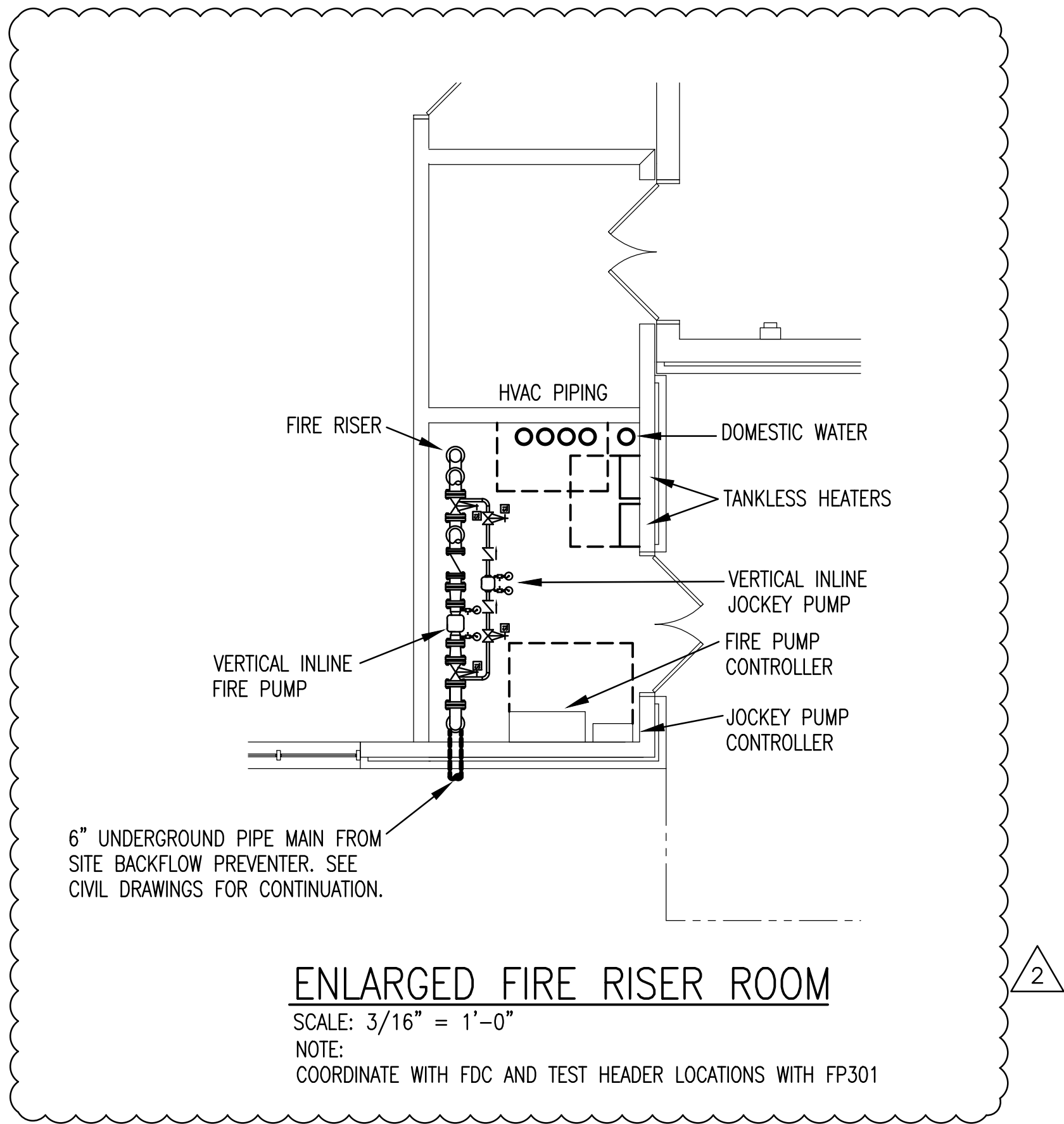
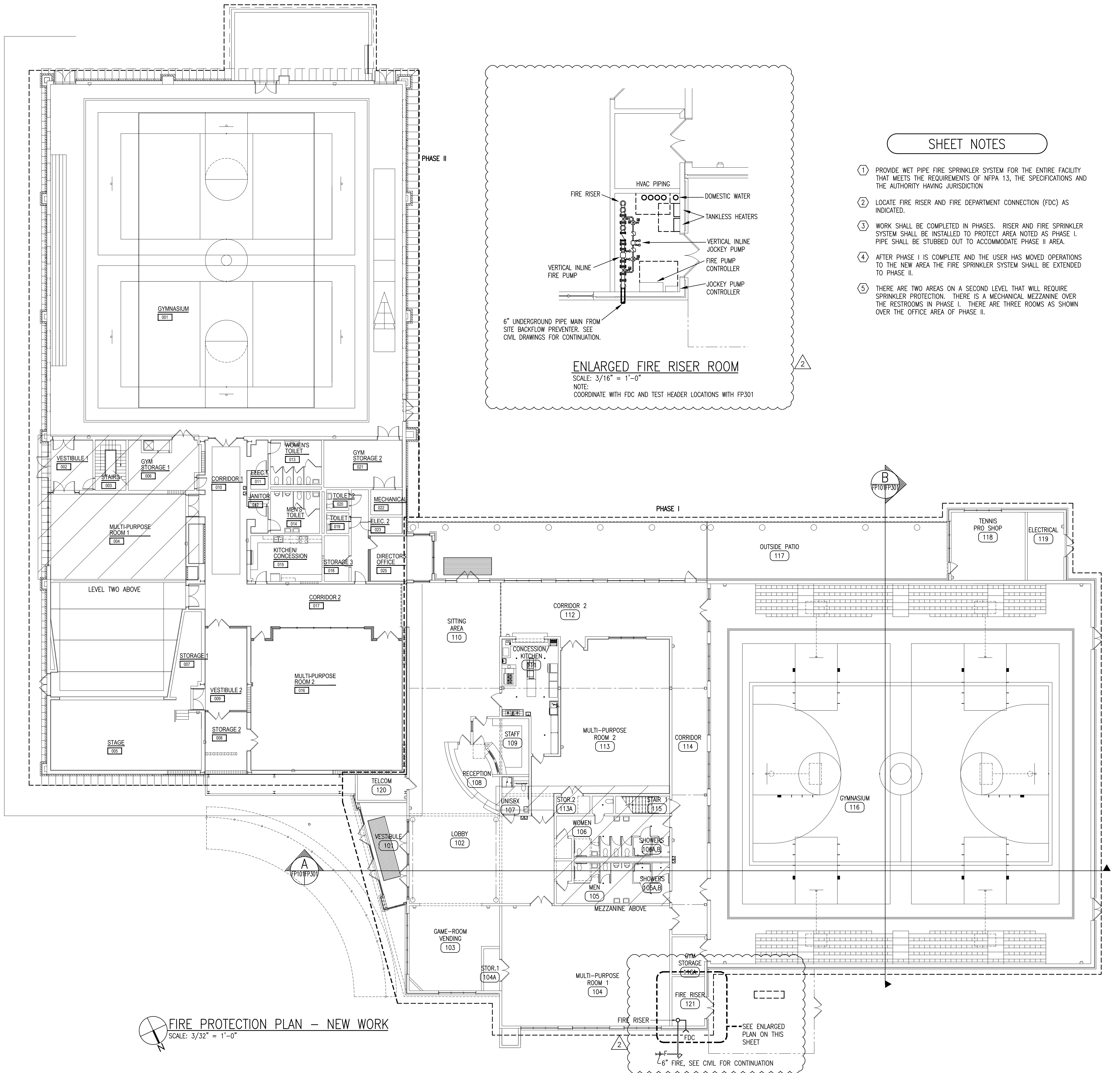


MECHANICAL MEZZANINE LEVEL TWO  
SCALE: 1" = 10'-0"



LEVEL TWO  
SCALE: 1" = 10'-0"



### SHEET NOTES

1. PROVIDE WET PIPE FIRE SPRINKLER SYSTEM FOR THE ENTIRE FACILITY THAT MEETS THE REQUIREMENTS OF NFPA 13, THE SPECIFICATIONS AND THE AUTHORITY HAVING JURISDICTION
2. LOCATE FIRE RISER AND FIRE DEPARTMENT CONNECTION (FDC) AS INDICATED.
3. WORK SHALL BE COMPLETED IN PHASES. RISER AND FIRE SPRINKLER SYSTEM SHALL BE INSTALLED TO PROTECT AREA NOTED AS PHASE I. PIPE SHALL BE STUBBED OUT TO ACCOMMODATE PHASE II AREA.
4. AFTER PHASE I IS COMPLETE AND THE USER HAS MOVED OPERATIONS TO THE NEW AREA THE FIRE SPRINKLER SYSTEM SHALL BE EXTENDED TO PHASE II.
5. THERE ARE TWO AREAS ON A SECOND LEVEL THAT WILL REQUIRE SPRINKLER PROTECTION. THERE IS A MECHANICAL MEZZANINE OVER THE RESTROOMS IN PHASE I. THERE ARE THREE ROOMS AS SHOWN OVER THE OFFICE AREA OF PHASE II.

SEAL

PETERSON ENGINEERING INC.

(PROF. ENG. # 3660)  
75 SOUTH "F" STREET  
PENSACOLA, FLORIDA 32501  
(850) 434-0513  
PE 201096

bay design  
associates architects, pl  
florida certificate of  
authorization AA0003597

PROJECT: Gulf Breeze Community Center  
800 Shoreline Drive  
Gulf Breeze, FL 32561

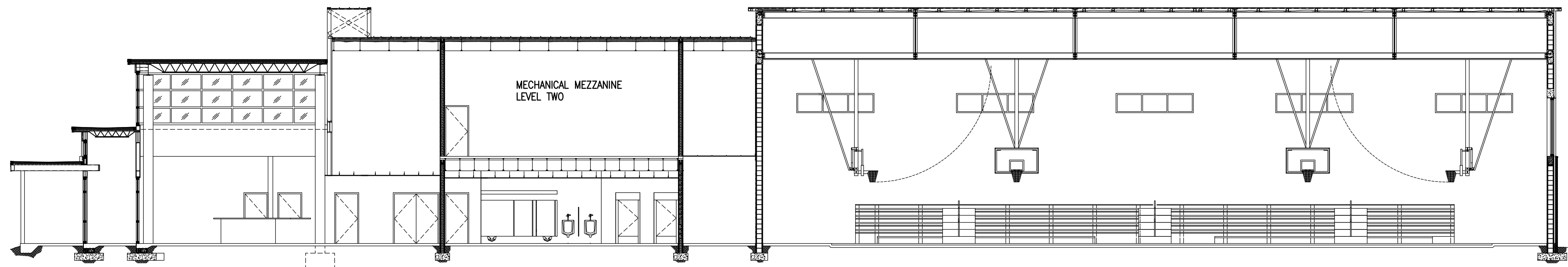
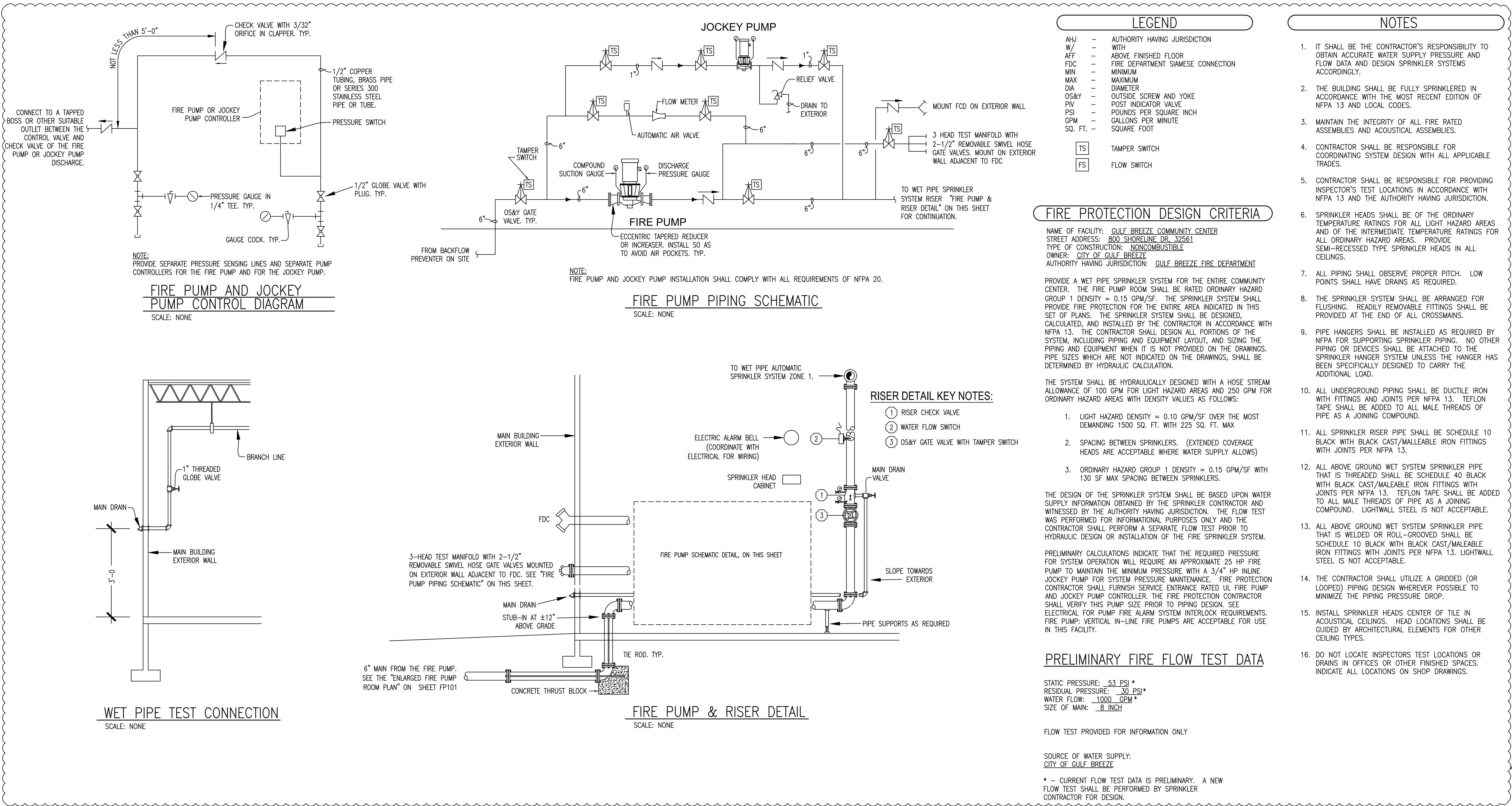
SHEET TITLE: FIRE PROTECTION PLAN - NEW WORK

PROJECT NO: 2413  
FILE NO:  
DATE: 06.01.2011  
REVISION:  
2 ADDENDUM #2  
06/20/11

SHEET

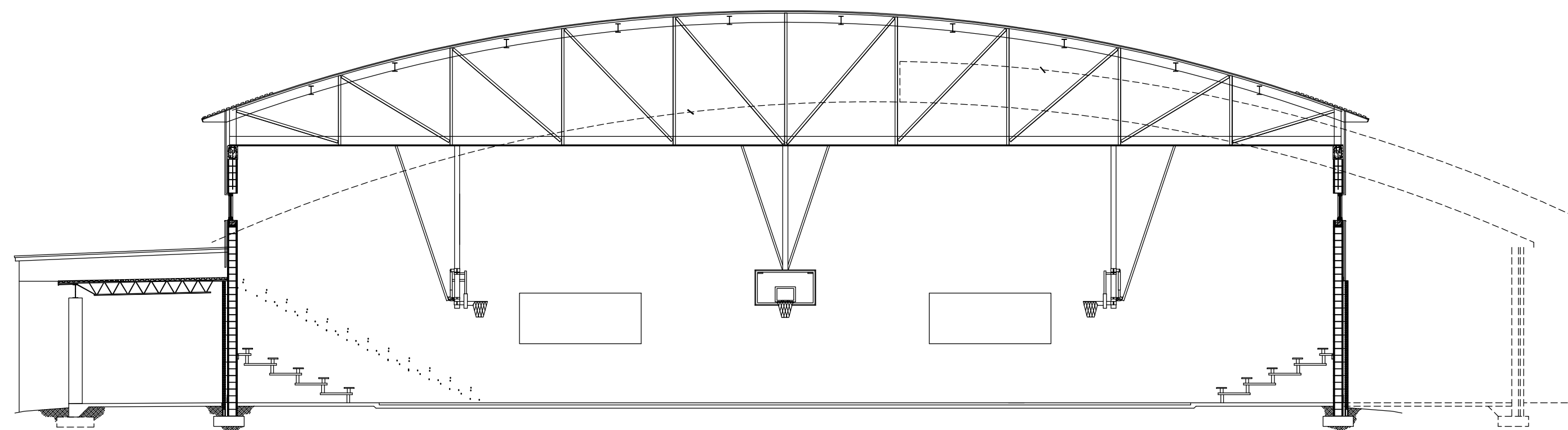
FP101





COMMUNITY CENTER SECTION  
SCALE: 1/8" = 1'-0"

A  
FP10/FP301



GYMNASIUM SECTION  
SCALE: 1/8" = 1'-0"

B  
FP10/FP301